



4-Star Trailers, Inc. SLANT LOAD HORSE TRAILER
 Base Model: 4S4D288LQ

Serial No: 40624

Model: HTXG4D387680

Customer: COAST TO COAST / INV.

Jig: 3 Date: 11/4/21

HEIGHT: 7'6"

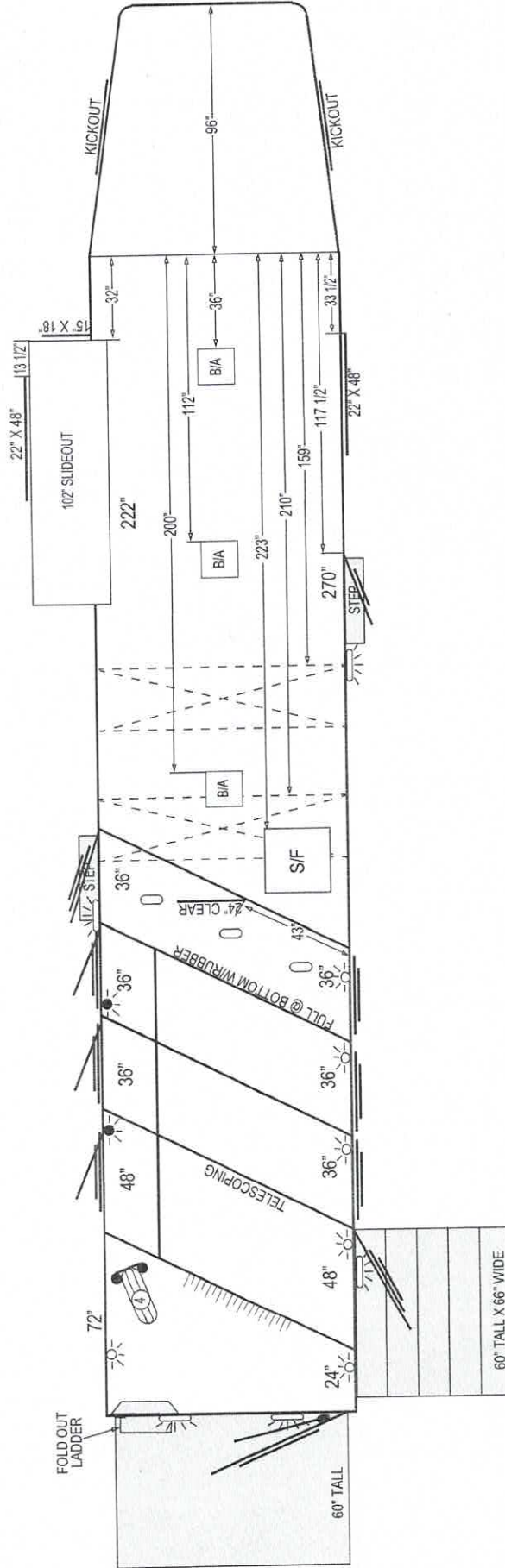
LENGTH: 37'6"

WIDTH: 8'0"

3/11/22

RKC
JLK

INTEGRATED HAYPOD



***NOTE: LIVING QUARTERS (INTERIORS)
 ARE FIGURED @ 400 LBS/FT (SHORTWALL)
 FOR CALCULATING AXLE AND TIRE REQUIREMENTS***

ALL MEASUREMENTS ARE APPROXIMATE



4-Star Trailers, Inc.

Base Model:4S4D288LQ

SLANT LOAD HORSE TRAILER

Serial No:

40624

Model:

HTXG4D387680

Customer:

COAST TO COAST / INV.

Jig:

3

Date:

11/4/21

3/11/22

RKC
JLK
REV. 11/22

INTEGRATED HAYPOD

SEE DRAWING

ALL MEASUREMENTS ARE APPROXIMATE

Width: 8'0" Length: 37'6" Height: 7'6" GVWR: _____

1	Coupler Assy: 2 5/16" ADJUSTABLE *LARGE GN & COUPLER ASSY* - SHORTEN COUPLER TO 18"			
2	Drop Leg: DUAL LEG HYDRAULIC (HWH) W/BATTERY WIRED UP			
3	Subframe Assy: *SPREAD AXLES* BLOCK AXLES 3" & ADJUST FENDERS		Overhang:	
4	Axles: 2-102" Capacity: 9,000 #	Type TORSION Brakes HYD / DISC	Hub: 8-BOLT Mtg. Brkt: 69 3/4"	
5	Tires: 245/ 70R 19.5, 18-PLY (CONTINENTAL)		Spare: YES	
6	Wheels: 19.5 X 7.5 ORCO ALUMINUM			
7	GN Floor Assy: .090 SMOOTH *96" GOOSENECK W/ REINFORCEMENT* - SEE LINE 33			
8	Floor Assy: SMOOTH RIBBED ALUMINUM - SEE LINE 33			
9	GN Side Assy: CLEAN COAT TAPER NOSE 12" EA. SIDE W/KICKOUT WINDOW @ CS & SS		C.S.	
10	Drop Ht: 46 7/8"			S.S.
11	Side Assy: CS: CLEAN COAT @ TOP W/DROP DOWN W/WINDOWS @ 1ST, 2ND & 3RD STALL - SEE LINE 35		C.S.	
12	SS: CLEAN COAT @ TOP W/FEED DOORS - SEE LINE 37		S.S.	
13	Nose: CLEAN COAT W/POLISHED CORNER CAPS			
14	Roof: INSULATE & LINE HORSE COMP. & REAR TACK - SEE LINE 63		Top Rail Lgth=	
15	Rear Doors: CLEAN COAT SINGLE (54" CLEAR) DOOR W/18" X 24" WINDOW W/BUTTERFLY LATCH - SEE LINE 42			
16	D/R Door: CLEAN COAT *29" CLEAR OPENING* W/WINDOW @ CS - SEE LINE 43 & 44			
17	W/T Door: CLEAN COAT W/DROP DOWN W/WINDOW & DROP DOWN WINDOW BARS SS @ BULKHD - SEE LINE 44			
18	Feed Doors: THREE (3) CLEAN COAT DROP DOWNS W/WINDOWS & DROP DOWN WINDOW BARS			
19	Dividers: THREE (3) 1/2 HORSE DIVIDERS W/PADS - SEE LINE 45			
20	Domelights: EIGHT (8)			
21	Lights & Wiring: STD., PAIR OF EXTRA HEIGHT TURN SIGNALS, (7) LIGHTS EACH TOP RAIL, (5) 11" L.E.D. AWNING			
22	LIGHTS: (1) CS @ D/R DOOR *LOW FOR AWNING*, (1) CS @ SIDE LOAD DOOR, (1) SS @ W/T DOOR & (2) @ REAR			
23	D.O.T. Tape: YES Custom Graphics: PN512 (BURGUNDY)			
24	X	Bulkhead Wall: PERM. SLANT - SEE LINE 46	NO	Floor Mats: NONE - SEE LINE 49
25	X	Rear Tack Wall: SEE LINE 47	X	Rubber Bulkhead Wall:
26	X	Feed Bags: ONE (1) @ 1ST STALL	X	Rubber CS & SS Walls:
27	X	Inside Ties, 2 Per: EIGHT (8)	X	Rubber Wheel Wells: SEE LINE 50
28	X	Outside Ties: EIGHT (8): (4) EACH SIDE	NO	Carpet: SEE LINE 51
29	X	Breast Bar:	X	Saddle Racks, 1 Per: FOUR (4) REMOVABLE SS CORNER IN R/T
30	X	Butt Bar: PADDED CHAIN @ CS 4TH STALL	X	Bridle Hooks (20): SEE LINE 52
31	X	Two-Way Roof Vents: THREE (3) @ 1ST STALL - SEE DRAWING	X	Brush Tray (2): (2) @ SS REAR WALL IN R/T
32		OPTIONS:	X	Blanket Bar (4): SWINGOUT @ REAR TACK DOOR
33	ENCLOSED DROP W/ROLL UP DOOR - SEE LINE 34			
34	SEAL COMPARTMENT FOR PROPANE BOTTLES TOWARD SS JACK W/DOUBLE ALUMINUM BATTERY TRAY ON TOP			
35	CLEAN COAT SIDE LOAD DOOR (1" THRESHOLD) W/DROP DOWN W/WINDOW CS @ 4TH STALL - SEE LINE 36			
36	CLEAN COAT 60" TALL X 66" WIDE EASY LIFT SIDE RAMP W/(4) TRACTION BARS *EVENLY SPACED* @ CS BEHIND SIDE LOAD DOOR			
37	102" SLIDEOUT @ SS TO START 32" B.O.D. - SEE LINES 38 & 41			
38	22" X 48" JALOUSIE WINDOW @ SS TO START 13 1/2" BACK OF FRONT SLIDEOUT WALL & 34" OFF SLIDEOUT FLOOR			
39	SEE PAGE 2			

VIN:

BY:

DATE:

CHKD:

DOC 40624



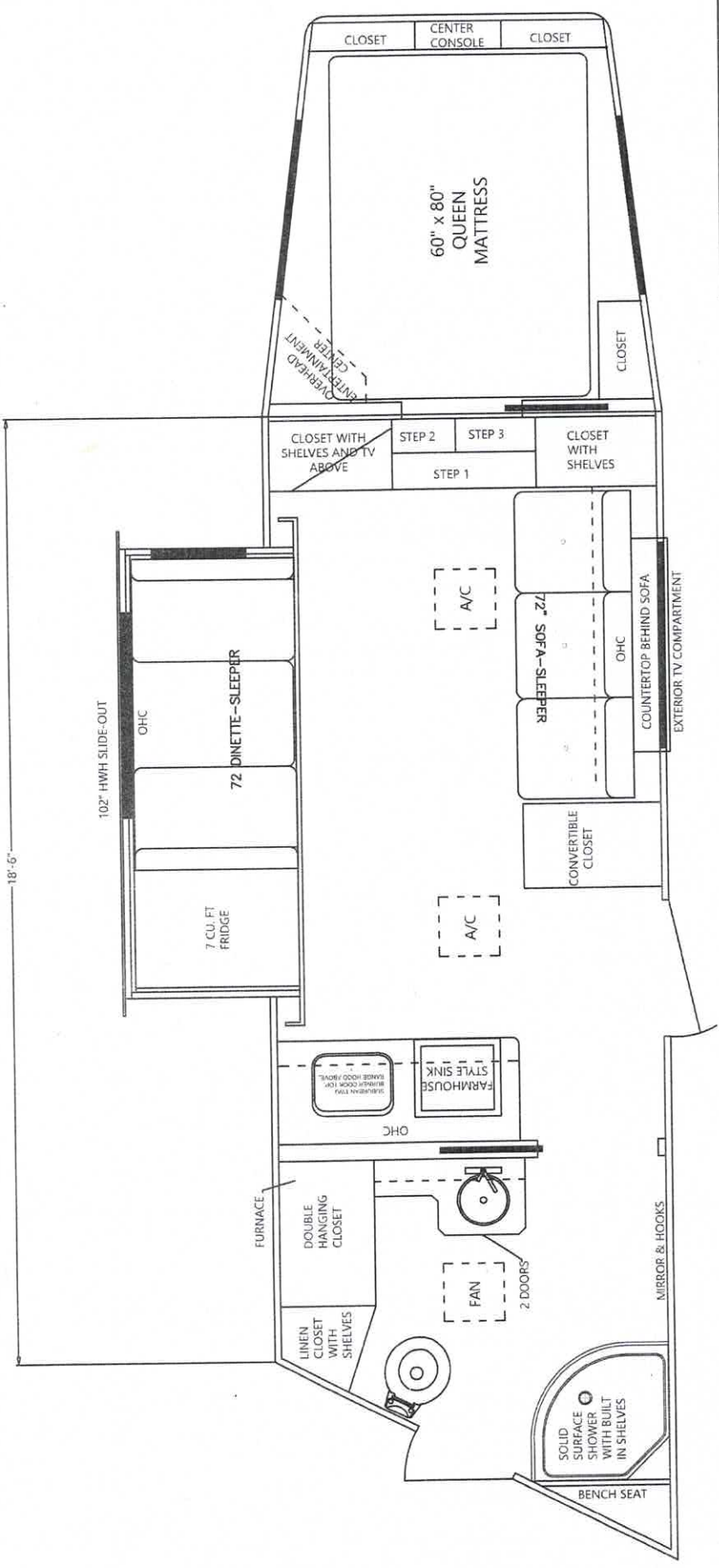
4-Star Trailers, Inc.

SLANT LOAD HORSE TRAILER

Serial No: 40624

Model: HTXG4D387680

40	OPTIONS CONTINUED:
41	(1) 15" TALL X 18" WIDE PICTURE WINDOW @ SS IN FRONT SLIDEOUT WALL TO START 40" OFF SLIDEOUT FLOOR
42	CLEAN COAT 60" TALL X FULL WIDTH EASY LIFT RAMP @ REAR
43	D/R DOOR: ROUGH OPENING TO START 117 1/2" B.O.D.
44	(2) FOLD DOWN STEPS: (1) CS @ D/R DOOR & (1) SS @ W/T DOOR
45	ALL DIVIDERS W/SPREAD AIR FLOW (BARS), 1ST DIVIDER FULL @ BOTTOM W/RUBBER ON BOTH SIDES. TELESCOPE LAST DIVIDER
46	BULKHEAD WALL W/DOOR (24" CLEAR), DOOR TO START 44 1/2" OFF CS WALL
47	PERMANENT SLANT REAR TACK WALL *SEALED TO ROOF* TO START 378" B.O.D.
48	(3) 22" LOWERED TROUGH STYLE FEED MANGERS W/(3) CLEAN COAT ACCESS DOORS @ 2ND, 3RD & 4TH STALLS
49	W.E.R.M. SEALED RUBBER FLOORING (BLACK) IN HORSE COMPARTMENT ONLY
50	TAPER WHEEL WELL UP TO SIDE & TAPER ENDS @ CS ONLY
51	CARPET ALL WALLS IN REAR TACK *BETWEEN POSTS*, CARPET REAR TACK DOOR & CARPET REAR TACK FLOOR
52	(20) BRIDLE HOOKS: (10) @ REAR TACK WALL - HIGH & (10) @ REAR TACK WALL 44" OFF FLOOR
53	(2) 24" HOLDING TANKS: (1) TO START 159" B.O.D. & (1) TO START 210" B.O.D.
54	22" X 48" JALOUSIE WINDOW @ CS TO START 33 1/2" B.O.D. & 43" OFF FLOOR
55	*FOLD-UP ACCESS DOOR W/DUAL GAS SHOCKS (32" TALL CLEAR X 48" WIDE CLEAR) - CLEAR OPENING TO START 33 1/2" B.O.D. * AP-
56	PROX. 7" OFF FLOOR*
57	(3) BRACES ONLY FOR ROOF AIR: (1) TO START 36" B.O.D., (1) TO START 112" B.O.D. & (1) TO START 200" B.O.D.
58	SPECIAL ROOF FRAMING: 24" X 24" TO START 223" B.O.D. & 8" OFF CS WALL
59	SPECIAL FRAMING (SS) *IN SLIDEOUT*: 14" TALL X 22" WIDE TO START 3 1/2" FROM REAR SLIDEOUT WALL & 5" OFF SLIDEOUT FLOOR
60	SPECIAL FRAMING (SS) *IN SLIDEOUT*: 14" TALL X 22" WIDE TO START 3 1/2" FROM REAR SLIDEOUT WALL & AS HIGH AS POSSIBLE
61	SPECIAL FRAMING (SS): 17" TALL X 17" WIDE TO START 149 1/2" B.O.D. & 6" OFF FLOOR
62	SPECIAL FRAMING (SS): 8 1/4" TALL X 18 1/4" WIDE TO START 179 1/2" B.O.D. & 6" OFF FLOOR
63	10 FT. CLEAN COAT INTEGRATED HAYPOD W/LARGE CLEAN COAT GENERATOR BOX @ CS & FOLD OUT LADDER @ SS REAR OF TRAILER
64	
65	
66	
67	
68	
69	
70	
71	
72	
73	
74	
75	
76	
77	
78	
79	
80	
81	
82	
83	
84	
85	
86	
87	
88	
89	



ALL DIMENSIONS ARE APPROXIMATE AND NOT TO SCALE UNLESS OTHERWISE NOTED.	CUSTOMER:	TRAILER VIN NO.
APPROVED BY:	DEALER:	DRAWING PART NO.
DRAWN BY: WJ	DATE: 11/18/19	18-6'SH-CS-SLIDE#8
SCALE: NONE	BRAND:	 <i>Never Compromise</i>

REV	DESCRIPTION	DATE
A	ENTER DRAWING	11/18/19



2021 Custom Quote Builder

VERSION 6.0

Date: October 28, 2021

Dealer: Coast to Coast

Customer: Demo

Brand: 4-Star

VIN#: 40624

2021 Standard Features

Cabinets & Trim

- * Solid Oak, maple or alder trim and cabinets throughout
- * Solid wood window trim
- * Crown molding throughout
- * Chair rail in living area and bathroom
- * Solid wood Raised Panel cabinet doors
- * Laminate countertops with solid wood edges
- * Hanging closets with countertop & mirror at the front of the gooseneck area
- * Control panels behind cabinet door in overhead (Per floor plan)
- * Overhead cabinet above sofa & kitchen base (Per floor plan)
- * Medicine cabinet with mirror in bathroom (Per floor plan)
- * Up to 6 drawers with ball bearing soft close drawer guides
- * Mirrored solid wood bathroom door
- * Hanging closet in the Gooseneck at drop wall
- * Full height Cabinets in bathroom and Main LQ area (Per floor plan)

Appliances and Electronics

- * Prep for air conditioner with non-powered fan
- * Prep for microwave with flip-up door & 110 Volt Outlet
- * Prep for 2 burner cook top with LP gas
- * Prep for TV antenna with wire and backer plate in roof
- * LCD TV Prep
- * Upgraded 12volt non-lighted bath fan
- * Prep for LP/Electric refrigerator with doors to enclose & clothes rod

Livability and Construction

- * 3/4" Tongue & groove subfloor with 50 Year water resistant warranty
- * Commercial grade vinyl flooring
- * Carpeted Gooseneck floor
- * R-6 Insulated floor throughout including gooseneck
- * R-13 Insulation in ceiling with R-11 in walls
- * Leather touch walls throughout
- * Leather touch ceiling throughout
- * Wood veneer lower panel walls to match cabinets
- * Carpeted Step or Boot box cover
- * Large double steps with storage into gooseneck (Per floor plan)
- * 6" Memory Foam mattress (53" x 75" on 7' wide & 60" x 80" on 8' wide)
- * Fire extinguisher
- * Smoke, LP & CO2 Detectors
- * Stainless steel exterior fasteners
- * 2 Year full coverage warranty

Electrical Features

- * Reading lights in gooseneck on switch
- * Recessed LED ceiling lights throughout
- * Light under sofa and kitchen overhead cabinet (If applicable)
- * LED lighted grab handle & Logo
- * LED Exterior 12 volt porch light
- * Hook up light under gooseneck area
- * Black receptacles and switches throughout
- * 30amp Shore cord inlet and cord
- * 120/12volt 55 Amp power converter
- * Single group 27 deep cycle battery
- * Coach monitoring system
- * 12volt & 120volt receptacle at countertop in gooseneck area
- * 120 Volt exterior GFCI protected receptacle
- * 30 Amp Main breaker and fuse panel
- * Heat Shrink terminals on all exterior electrical connections

Plumbing Features

- * On demand pressure water system tested at 100 PSI
- * Auto light 6 Gallon gas water heater
- * Porcelain toilet (Bone Color)
- * Sewer hose & holder under gooseneck
- * Largest possible fresh water tank (Per plan)
- * Largest possible waste tanks with 90 degree termination valves
- * Shower pan with one piece surround (Parchment Color)
- * Glass Shower door
- * Upgraded brushed nickel or oil rubbed bronze faucets
- * Stainless steel sink(s) sized per floor plan
- * Outside water spigot located under gooseneck
- * Dual 20# LPG Tanks with auto change regulator
- * Black iron LP main line with copper gas lines to all appliances

Décor Features

- * Brushed nickel or oil rubbed bronze hardware & lighting
- * Stainless Steel or Black Appliances
- * Full height mirror (Per Floor Plan)
- * Solid Wood window valances
- * Upholstered panels on entry and pass through door
- * Roll up night shades on all windows with snap cover on entry door window

Color Selections

Wood Species: _____

Exterior Hardware: _____

Gooseneck Ceiling: _____

Gooseneck Walls: _____

Slide Out Ceiling: _____

Kitchen backsplash _____

Valance Style: STANDARD - WOOD

Entry Door(s) Style: STANDARD

Seating Style: DELUXE

Sofa Pillow Style: 18" x 18" One Color

Wood Stain: _____

Flooring: _____

Main LQ Ceiling: _____

Main LQ Walls: _____

Slide Out Walls: _____

Bathroom backsplash _____

Valance Base Color: _____

Entry Door Base Color: _____

Seating Base Color: _____

Sofa Pillow Color: _____

Wood Finish Sheen: _____

Countertops: _____

Bathroom Ceiling: _____

Bathroom Walls: _____

Kitchen Walls: _____

Interior hardware Color: _____

Valance Accent Color: N/A

WINDOW SNAP COVER Color: _____

Seating Accent Color: _____

Appliance Color: _____

Pricing and Available Options

Quantity	Base Package Pricing	
1	Base Package Price for up to 8' short wall	
10.5	Additional length per foot of short wall or straight wall over 8'	
Slide out Options		
8.5	Finish trailer manufacturer built slide out (Includes standard decorative slide out fascia)(Price per foot of slide) - HYDRAULIC	
1	Slide out awning with aluminum cover up to a 12' slide out	
1	Upgrade to refrigerator in slide (Per floor plan)	
Exterior Options		
1	9100 series electric awning up to 21' length (Lengths over 19' require center support)	
1	Aluminum weather shield cover upgrade to awning	
Generator, Electrical & Solar options		
1	Upgrade to 50 amp electrical service (Includes shore cord with 50 amp to 20 amp adapter & upgrades power converter to 90 amp)	
1	5.5KW EFI Gas generator with fuel tank, gas gauge, & remote start	Location: <u>Roof with Gas tank location TBD</u>
1	Up to 5 LED hallway lights switched together at entry door	
Plumbing Options		

1	10 Gallon Auto light LP water heater in place of standard 6 Gallon		
1	Electric upgrade to Auto light LP water heater for gas-electric combo heater (50 amp electric service is recommended)		
Heating, Cooling and Venting options			
2	13,500 BTU Non Ducted Air conditioner with heat strip		
2	Upgrade to ducted air conditioner with single control thermostat (For use with all air conditioner options)		
1	Upgraded AC Thermostat with dual zone capabilities and outdoor temperature sensor (Required when optioning two or more AC Units)		
1	20,000 BTU forced air ducted furnace		
1	Roll-up screen door	Location(s):	Entry door
Bedroom & Sleeping Options			
1	Full height privacy wall into gooseneck with pocket door(s)		
Kitchen Options			
1	WHITE colored porcelain UNDERMOUNT sink upgrade to kitchen - FARMHOUSE/APRON STYLE		
1	7 Cu.Ft. 2-Way LP/120 volt refrigerator with electronic ignition		
1	Solid wood raised panel door insert upgrade to 6 Cu. Ft. through 12 Cu.Ft. refrigerators (Flat panel wood is standard)		
1	2 Burner recessed LP cooktop with glass cover and range hood		
1	Built-in convection microwave (Requires 18" deep overhead cabinet)(50 amp electric service is recommended)		
Bathroom Options			
1	Sky dome above shower		
1	Solid surface 32" shower base with built-in bench seat and shelves		
1	WHITE colored porcelain UNDERMOUNT upgrade to bath sink		
1	WHITE Porcelain Toilet		
Cabinet & Trim options			
18.5	Custom Paint for cabinets and trim (Price per foot of floor length)		
1	Convertible closet upgrade to wardrobe closet	Location(s):	Closet by entry door
2	Additional drawer with ball bearing soft close drawer guide	Location(s):	Under each dinette bench seat
Décor Options			
2	Solid wood AC Cover for ducted air conditioner return		
1	Custom cabinet door pulls	Style:	TBD
4	Additional coat or robe hook (One is standard)	Location(s):	Side of entry door closet
11	Custom tile accent to wall (Price per square foot)	Location(s):	Kitchen & Bath
20	Solid surface countertop or table upgrade (Price per square foot)	Location(s):	Kitchen, Bath, Dinette Table & Counter behind sofa
Seating & Upholstery Options			
1	Sofa-sleeper up to 84" in length with two 18" x 18" pillows (Includes removable table)		
1	Dinette-Sleeper up to 84" in length		
Entertainment Options			
1	AM/FM/CD/DVD Stereo with two speakers (A) in main LQ area, two speakers (B) in gooseneck area and two exterior (C) speakers		
1	TV antenna with amplifier		
2	Additional TV location (One is standard)		
1	Blu-ray Player built into cabinet	Connects To:	GN Area
2	24" LED 720P HD Television	Location(s):	Main & GN Area
1	Exterior entertainment center with 50" LED 1080P Television and built-in sound bar (Does not include compartment door)		
3	Locking swing arm for up to 40" TV		
1	Self seeking satellite dish with prep for Satellite receiver in cabinet nearest each TV (Will not work with HD DirecTV receivers)		
2	DirecTV Standard Definition Receiver	Location(s):	Main & GN Area- Outside TV tied to Main TV

Outback Customs, LLC reserves the right to changes prices, specifications and equipment at any point due to situations or circumstances out of our control. The two year warranty from the date of purchase must have the warranty registration card (included in owners manual) filled out and submitted via mail, email, or fax to activate warranty

Dealer Approval: _____

Date: _____

Customer Approval: _____

Date: _____